

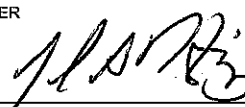



~ESCG~

1. PROJECT CODE SA-AMS		2. JPIC CODE AMS		TASK PERFORMANCE SHEET NASA - LYNDON B. JOHNSON SPACE CENTER			
TYPE	A CONFIGURATION CHANGE <input checked="" type="checkbox"/>		4. TPS NO. 2A0720176		5. PAGE 1 OF 7		
	PERMANENT <input type="checkbox"/> TEMPORARY <input checked="" type="checkbox"/>		6. MOD SHEET(S) NUMBER(S)		7. ORG. EA		8. SYSTEM AMS
	B NONCONFIGURATION CHANGE <input type="checkbox"/>						9. NEED DATE 8/15/07
10. PART NAME Upr and Lwr USS-02 Payload Shipping			11. PART NO./DRAWING NO. SEG38116929-301, SEG38116930-303		12. SERIAL/LOT NO. N/A		13. TIME/CYCLE/SHELF LIFE <input type="checkbox"/> YES <input checked="" type="checkbox"/> NO
14. APPLICABLE DOCUMENTS N/A			15. CONTRACT NO./JOB NO. NNJ05HI05C		16. HAZ. TEST <input type="checkbox"/> YES <input checked="" type="checkbox"/> NO		17. ENG. EVAL. <input type="checkbox"/> YES <input checked="" type="checkbox"/> NO
18. SHORT TITLE OF TPS Unpacking Upper, Lower USS, keel Shipping Containers (CERN)						19. ADP UPDATE <input type="checkbox"/> YES <input checked="" type="checkbox"/> NO	
20. OPER SEQ. NO.		21. OPERATIONS (Print, Type, or Write Legibly)  7-30-07				VERIFICATION	
		<p style="text-align: center;">NOTE</p> <p>The Jacobs Project Engineer on site has the option to reorder the steps in order to facilitate the logistics of moving around this large hardware.</p> <p>1. Open this TPS.</p> <p style="text-align: center;">LOWER USS OFFLOADING</p> <p>CAUTION: DO NOT DAMAGE FLIGHT HARDWARE DURING THE LOWER USS OFFLOADING PROCESS.</p> <p>2. Remove the Lower USS Shipping Assembly, SEG38116930-303, from the shipping vehicle using a fork lift. The Lower USS Shipping Assembly has 2 tube structures for the fork lift.</p> <p style="text-align: center;">KEEL OFFLOADING</p> <p>CAUTION: DO NOT DAMAGE FLIGHT HARDWARE DURING THE KEEL OFFLOADING PROCESS.</p> <p>3. Remove the wood crate for the USS-02 Assembly Keel Assembly, SEG39135768-301, from the shipping vehicle using a fork lift.</p>				22. TECH	
						23. QA/DV	
24. ORIGINATOR John Heilig 			DATE 7-30-07	25. FINAL ACCEPTANCE STAMP AND DATE			
APPROVALS (Printed or Typed and Signed)							
26. PROJECT ENGINEER John Heilig 			DATE 7-30-07	27. QUALITY ENGINEER Steve Caldwell 			DATE 7-30-07
28.				ORIGINAL			
30.				31. Return to Bldg. <u>10</u>			
				Rm. <u>114</u> QARC			

TASK PERFORMANCE SHEET
 CONTINUATION PAGE
 NASA - LYNDON B. JOHNSON SPACE CENTER

4. TPS NO.

2A0720176

6. MOD NO.

20. OPER
SEQ. NO.

21. OPERATIONS
(Print, Type, or Write Legibly)

VERIFICATION

22. TECH

23. QA/DV

UPPER USS UNPACKING

4.

Using figure 1 as a reference, remove cover panels identified by balloons 13 through 18. Store all fasteners, NAS1351N3LB12, item 27, lock spring washers, MS35338-138, item 35, and flat washers, NAS1149E0332R, item 36 resulting from the panel removal in separate plastic bags.



8-16-07

TASK PERFORMANCE SHEET
 CONTINUATION PAGE
 NASA - LYNDON B. JOHNSON SPACE CENTER

4. TPS NO.

2A0720176

6. MOD NO.

20. OPER
 SEQ. NO.

21. OPERATIONS
 (Print, Type, or Write Legibly)

VERIFICATION

22. TECH

23. QA/DV

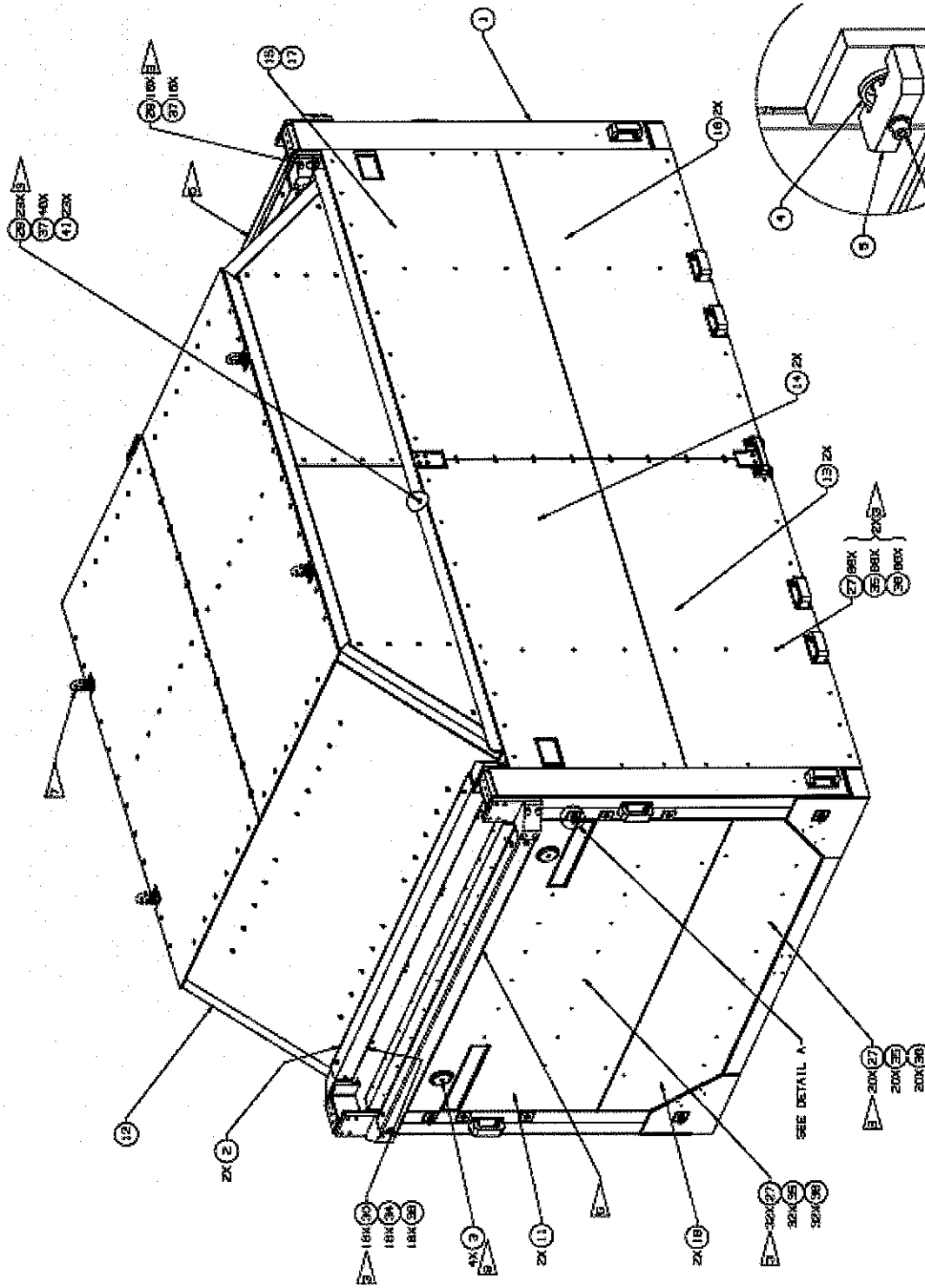


Figure 1 (View Rotated 90° Counter Clock Wise)

TASK PERFORMANCE SHEET
 CONTINUATION PAGE
 NASA - LYNDON B. JOHNSON SPACE CENTER

4. TPS NO.	2A0720176
6. MOD NO.	

20. OPER SEQ. NO.	21. OPERATIONS (Print, Type, or Write Legibly)	VERIFICATION	
		22. TECH	23. QA/DV

5. Using figure 1 as a reference, remove the two (2) Sliding Frame Cover Assembly, SEG38117068-301, item 11. Store all fasteners, NAS1351N4LB20, item 30, lock spring washers, MS35338-139, item 38, and flat washers, NAS1149E0432R, item 34 resulting from the panel removal in separate plastic bags. Mark on bag the panel from which the fasteners and washers were removed.
6. Using figure 1 as a reference, disconnect the Cover Assembly, SEG38117057-301, item 12. Store all fasteners, NAS1958C70, item 28, countersink washers, NAS1587-8C, item 37, and self-locking nut NAS1291C8M, item 41 resulting from the panel removal in separate plastic bags. Mark on bag the panel from which the fasteners and washers were removed.
7. Download the data from all 6 shock writers per TPS 2A0720179.
8. Attach four (4) straps that are rated for at least 750 lbs to the swivel hoist rings on the Cover Assembly, SEG38117057-301. The swivel hoist rings are identified with flag 7 in figure 2.

ESC TECH 18
8-16-07

ESC TECH 18
8-16-07

JH
8-25-07

JH
8-16-07

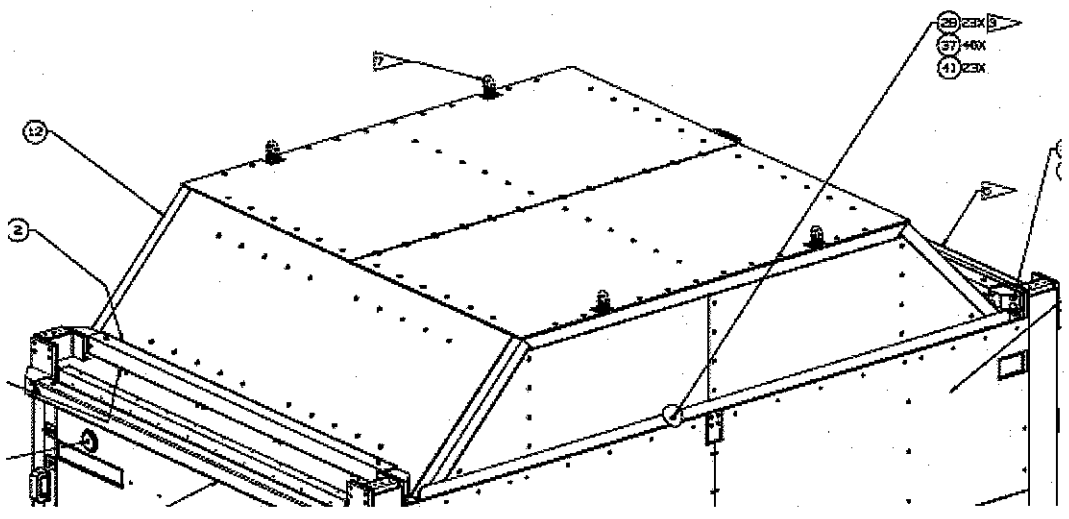


Figure 2

9. Place the four (4) straps on the facility crane.
CAUTION: DO NOT DAMAGE FLIGHT HARDWARE DURING THE COVER ASSEMBLY REMOVAL PROCESS
10. Slowly raise the facility crane to remove the Cover Assembly, SEG38117057-301. Move the Cover Assembly to an area designated by the facility personnel.

JH
8-26-07

JH
8-16-07

TASK PERFORMANCE SHEET
 CONTINUATION PAGE
 NASA - LYNDON B. JOHNSON SPACE CENTER

4. TPS NO.

2A0720176

6. MOD NO.

20. OPER
SEQ. NO.

21. OPERATIONS
(Print, Type, or Write Legibly)

VERIFICATION

22. TECH

23. QA/DV

11. Detach the slings from the facility crane and the Cover Assembly, SEG38117057-301.

JH
8-16-07

12. Remove two (2) Vertical Panel Bolt Assembly, SEG38117063-701. The Vertical Panel Bolt Assemblies are identified as item 40 in Figure 3. Store all fasteners, NAS1351N4LB12, item 75 and flat washers, NAS1149E0432R, item 80 resulting from the Vertical Panel Bolt Assembly removal in separate plastic bags. Mark on bag the assembly from which the fasteners and washers were removed.

ESC
TECH
18
8-17-07

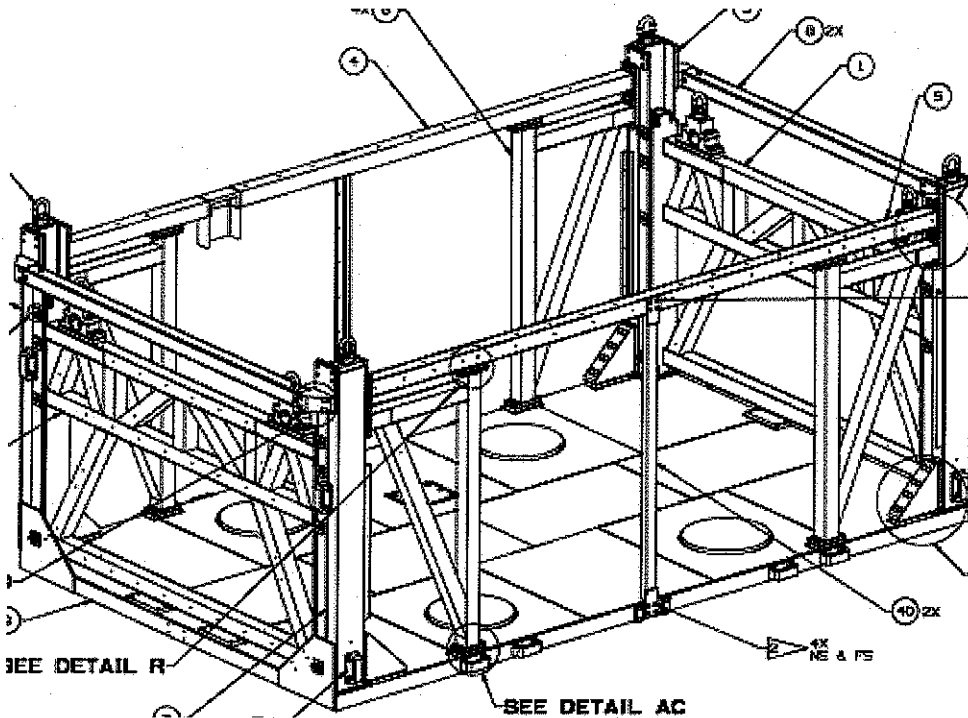


Figure 3

LOWER USS UNPACKING

13. Remove shipping cover on the Lower USS Shipping Fixture (LUSS-SF) by removing sixteen (16) bolts, HTHMBSCHCM8X1 -21, item 16 and washers, NAS1149E0563R, item 22. See figure 4. Place the bolts and washers in a bag. Mark on bag the location from which the bolts and washers were removed.

ESC
TECH
18
8-16-07

TASK PERFORMANCE SHEET
 CONTINUATION PAGE
 NASA - LYNDON B. JOHNSON SPACE CENTER

4. TPS NO.

2A0720176

6. MOD NO.

20. OPER
SEQ. NO.

21. OPERATIONS
(Print, Type, or Write Legibly)

VERIFICATION

22. TECH

23. QA/DV

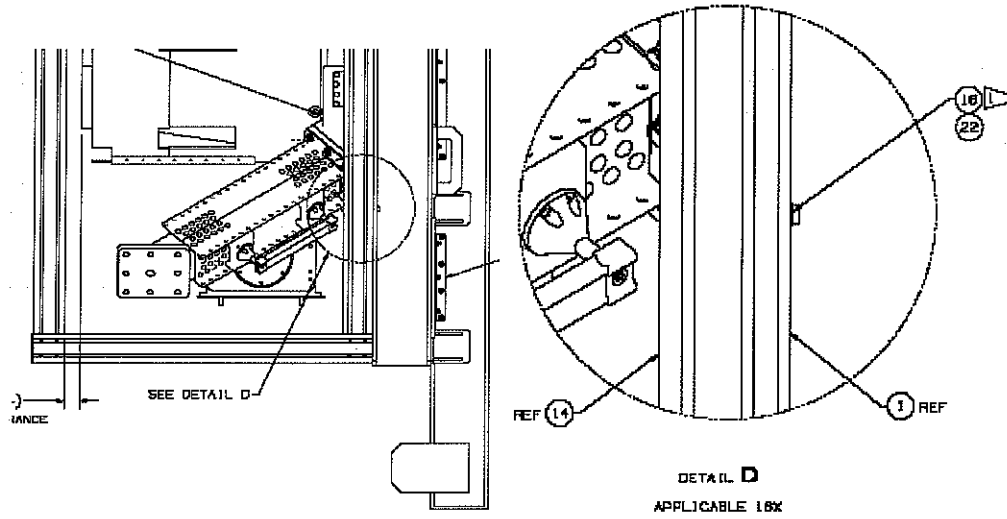


Figure 4

14. Attach four (4) straps that are rated for at least 750 lbs to the eye-bolts on top of the shipping cover. Attach the straps to the facility crane.

JH
8-16-07

Eye Bolts

Eye Bolts



TASK PERFORMANCE SHEET
 CONTINUATION PAGE
 NASA - LYNDON B. JOHNSON SPACE CENTER

4. TPS NO.

2A0720176

6. MOD NO.

20. OPER
SEQ. NO.

21. OPERATIONS
(Print, Type, or Write Legibly)

VERIFICATION

22. TECH

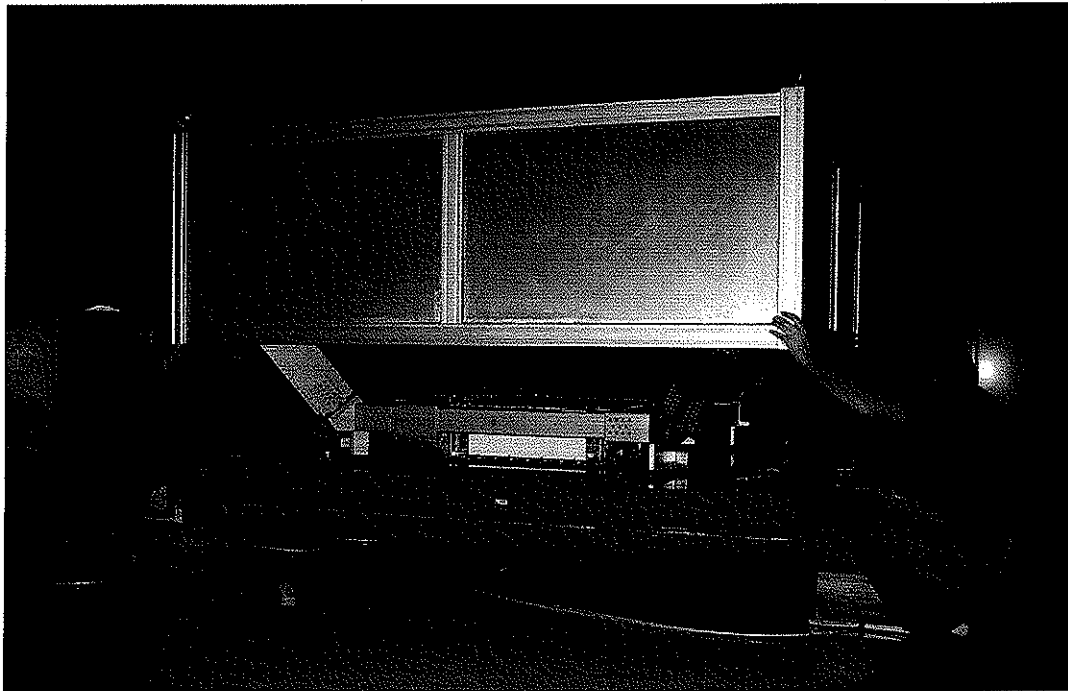
23. QA/DV

15.

CAUTION: DO NOT DAMAGE FLIGHT HARDWARE DURING THE SHIPPING COVER REMOVAL PROCESS

Slowly raise the shipping cover vertically and avoid of hitting the flight hardware, and place the shipping cover in an area designated by the facility personnel.

JH
8.16.07



16.

Download the data from 2 shock writers per TPS 2A0720174.

JH
8.25.07

17.

Remove the lid for the wood crate for the USS-02 Assembly Keel Assembly, SEG39135768-301.

ESC
TECH
8-17-07

18.

Perform Alodine repair per TPS. Record TPS number 2A0720185

JH
8.28.07

19.

Install the lid for the wood crate for the USS-02 Assembly Keel Assembly, SEG39135768-301.

JH
8.28.07

20.

Store the USS-02 Assembly Keel Assembly, SEG39135768-301 in a secure facility. Facility location will be determined by CERN personnel.

JH
8.28.07

21.

Close this TPS.