

1. PROJECT CODE: SA-AMS
 2. JPIC CODE: AMS
TASK PERFORMANCE SHEET
 NASA - LYNDON B. JOHNSON SPACE CENTER

3. **A** CONFIGURATION CHANGE 4. TPS NO. **2A0720280** 5. PAGE **1** OF **4**
 PERMANENT TEMPORARY 6. MOD SHEET(S) NUMBER(S) 7. ORG. **EA** 8. SYSTEM **N/A** 9. NEED DATE **11/10/07**
B NONCONFIGURATION CHANGE

10. PART NAME: **Upper Payload / USS-02 Ass'y** 11. PART NO./DRAWING NO.: **SEG39135726-302** 12. SERIAL/LOT NO.: **N/A** 13. TIME/CYCLE/SHELF LIFE: YES NO

14. APPLICABLE DOCUMENTS: **WCIJ Installation Plan, RCIJ Installation Plan** 15. CONTRACT NO./JOB NO.: **NNJ05HI05C** 16. HAZ. TEST: YES NO 17. ENG. EVAL.: YES NO

18. SHORT TITLE OF TPS: **AMS-02 Unique Support Structure - Ram and Wake Radiator Jig Installation** 19. ADP UPDATE: YES NO

20. OPER. SEQ. NO. 21. OPERATIONS (Print, Type, or Write Legibly) **ESC 11-2-07** VERIFICATION 22. TECH 23. Q/AV

The purpose of this TPS is to give the Installation steps of the Main Radiator Jigs and Crates onto the USS.

NOTE: Dangerous lifting of GSE over the Flight USS is required. Proper CERN safety equipment and processes must be followed.

1. Open this TPS.

The Jacobs Project Engineer on site has the option to reorder steps in order to facilitate the logistics of moving around this large hardware.

USS Preparations: The USS is in the cleanroom at CERN. It has been removed from the PSS and placed into the RAS. The RAS has inverted the USS following standard CERN procedures in preparations for the installation of the Main WAKE and RAM Radiator Jigs. Follow AMS-CERN standard operating procedures for RAS rotation.

2. Ensure CERN Personnel attach a warning tag to the RAS control box to prevent rotation of the RAS. All other operations of the RAS are acceptable.

3. Remove the two (2) Diagonal Strut Assemblies SEG39135741-301. As per figure 1-1, remove cotter pins (55), nuts (42) and washers (44) from both ends of each diagonal strut as shown in Figure 1-2. Bag and retain these parts for

24. ORIGINATOR: **John Heilig** DATE: **11-2-07** 25. FINAL ACCEPTANCE STAMP AND DATE

APPROVALS (Printed or Typed and Signed)

26. PROJECT ENGINEER: **John Heilig** DATE: **11-2-07** 27. QUALITY ENGINEER: **Steve Caldwell** DATE: **11-2-07**

28. 29. **ORIGINAL** 30. 31. **Return to Bldg. 10**

TASK PERFORMANCE SHEET
 CONTINUATION PAGE
 NASA - LYNDON B. JOHNSON SPACE CENTER

4. TPS NO.

2A0720280

6. MOD NO.

20. OPER
 SEQ. NO.

21. OPERATIONS
 (Print, Type, or Write Legibly)

VERIFICATION

22. TECH

23. QADV

reuse. Take care to support the diagonal struts during removal of the pins (35) and washers (39) to prevent damage to the struts or USS.

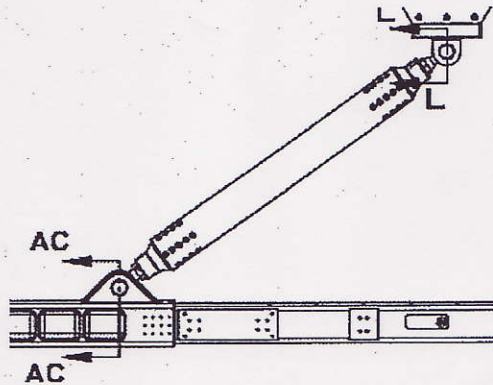


Figure 1-1

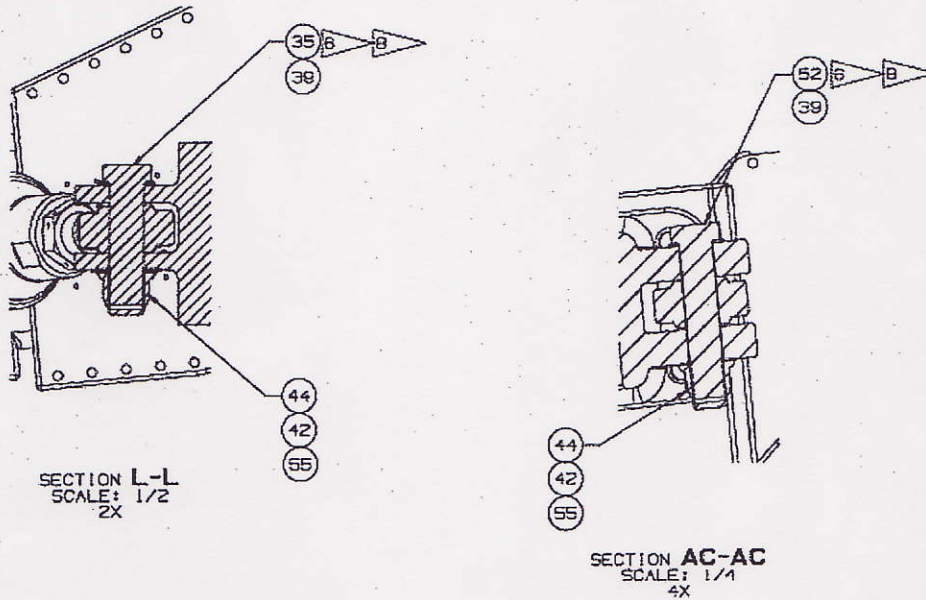


Figure 1-2

4. Storage Store the Diagonal Strut Assemblies, pins and fasteners for reuse later in this TPS. Store in a secure location.

WARNING: Rotation of the USS is prohibited until the Diagonal Struts are reinstalled. Tag the RAS to prevent rotation of the USS.

13/11/07
 19 Jul 07
 HPS

TASK PERFORMANCE SHEET
 CONTINUATION PAGE
 NASA - LYNDON B. JOHNSON SPACE CENTER

4. TPS NO.

2A0720280

6. MOD NO.

20. OPER
SEQ. NO.

21. OPERATIONS
(Print, Type, or Write Legibly)

VERIFICATION

22. TECH

23. QA/DV

MIP-V
1
11-2-07

5.

Install the the Main Radiator RAM Jig and Crates per AMS-02 Task Sheet (ATS)

TCS070949-1 Procedure start date 16-11-07

ESCG Designated Verifier (DV) KEVIN BOLLWEG

Note: Contact Radiator Jig Engineering as required.

Note: ESCG Designated Verifiers (DV) shall witness and verify all torque applications, confirm the Running (or Run-in) and Final torques, and proper documentation of these torques relative to this procedure and any other sub-process relative to this task. Designated Verifier (DV) shall coordinate with ESCG quality personnel for any additional verification of steps that would normally require a Mandatory Inspection Point or (MIP). ESCG Designated Verifier shall insure compliance with NASA/JSC NT-CWI-001 work instruction.

Indicate procedure end date for the Main Radiator RAM Jig and Crates.

Procedure end date 19-11-07.

19/11/07
KB

MIP-V
1
11-2-07

6.

Install the the Main Radiator WAKE Jig and Crates per AMS-02 Task Sheet (ATS)

TCS070919-1 Procedure start date 13-11-07

ESCG Designated Verifier (DV) KEVIN BOLLWEG

Note: Contact Radiator Jig Engineering as required.

Note: ESCG Designated Verifiers (DV) shall witness and verify all torque applications, confirm the Running (or Run-in) and Final torques, and proper documentation of these torques relative to this procedure and any other sub-process relative to this task. Designated Verifier (DV) shall coordinate with ESCG quality personnel for any additional verification of steps that would normally require a Mandatory Inspection Point or (MIP). ESCG Designated Verifier shall insure compliance with NASA/JSC NT-CWI-001 work instruction.

Indicate procedure end date for the Main Radiator WAKE Jig and Crates.

Procedure end date 15-11-07.

19/11/07

7.

As shown in Figure 2-1, install the Diagonal Strut Assemblies to the STA VC by installing one (1) Washer, Flat P/N NAS1149E1632R, item 42; one (1) Washer, CSK, P/N NAS1587-16C, item 39; one (1) Nut, Self Locking, P/N NAS1805-16, item 44; and one (1) Pin, Clevis, VC, Diagonal Bracket P/N SDG39135744-003, item 35. Tighten the nuts until they bottom out. Do not torque. Use grease on threads

Braycote Grease

PN 601EF

Lot# 86440

Exp. Date 3/29/2026

KB
19/11/07

TASK PERFORMANCE SHEET
 CONTINUATION PAGE
 NASA - LYNDON B. JOHNSON SPACE CENTER

4. TPS NO.

2A 072.0280

6. MOD NO.

20. OPER
 SEQ. NO.

21. OPERATIONS
 (Print, Type, or Write Legibly)

VERIFICATION

22. TECH

23. QA/DV

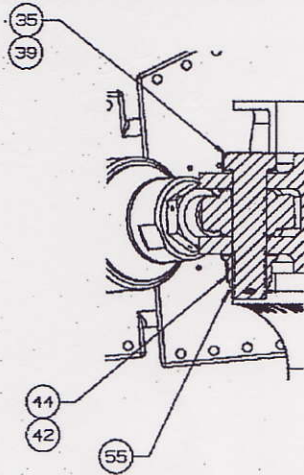


Figure 2-1

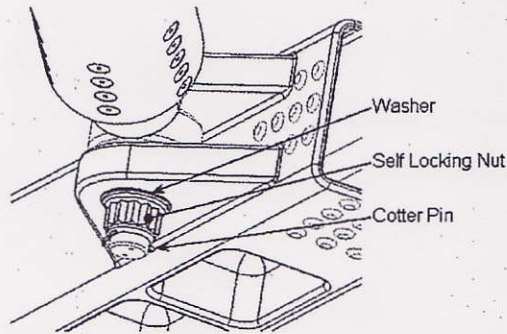


Figure 2-2

8. As shown in Figure 2-1, install other end of the Diagonal Strut Assemblies to the USS-02 by installing one (1) Washer, Flat P/N NAS1149E1632R, item 42; one (1) Washer, CSK, P/N NAS1587-16C, item 39; one (1) Nut, Self Locking, P/N NAS1805-16, item 44; and one (1) Pin, Clevis, USS-02, Diagonal Bracket P/N SDG39135744-002, item 52 Tighten the nuts until they bottom out. Do not torque. Use grease on threads

Braycote Grease

PN 601EF Lot# 86440 Exp. Date 3/29/2026

9. Install the four (4) cotter pin, MS24665-306, item 55 in Figure 2-1 to all self locking nuts, item 44.

NOTE: Rotation of the RAS is now acceptable. Follow AMS-CERN standard operating procedures for RAS rotation

10. Close this TPS

H/B
 19/11/07

H/B
 19/11/07

H/B
 19/11/07