

1. PROJECT CODE		2. JPIC CODE		TASK PERFORMANCE SHEET					
SA-AMS		AMS		NASA - LYNDON B. JOHNSON SPACE CENTER					
3. TYPE	A	CONFIGURATION CHANGE		<input checked="" type="checkbox"/>	4. TPS NO. 2A0720045		5. PAGE 1 OF 4		
	PERMANENT		<input checked="" type="checkbox"/>	TEMPORARY	<input type="checkbox"/>	6. MOD SHEET(S) NUMBER(S)	7. ORG.	8. SYSTEM	9. NEED DATE
	B	NONCONFIGURATION CHANGE		<input type="checkbox"/>		EA1	AMS	2/02/2007	
10. PART NAME				11. PART NO./DRAWING NO.		12. SERIAL/LOT NO.	13. TIME/CYCLE/SHELF LIFE		
Lower Payload / USS-02 Ass'y				SEG38116930		N/A	<input type="checkbox"/> YES <input checked="" type="checkbox"/> NO		
14. APPLICABLE DOCUMENTS				15. CONTRACT NO./JOB NO.		16. HAZ. TEST	17. ENG. EVAL.		
ECAL STA Integration2				NNJ05HI05C		<input type="checkbox"/> YES <input checked="" type="checkbox"/> NO	<input type="checkbox"/> YES <input checked="" type="checkbox"/> NO		
18. SHORT TITLE OF TPS							19. ADP UPDATE		
LUSS and ECAL Installation							<input type="checkbox"/> YES <input checked="" type="checkbox"/> NO		
20. OPER SEQ. NO.	21. OPERATIONS (Print, Type, or Write Legibly)						VERIFICATION		
							22. TECH	23. QADV	
1.	<p>Open this TPS.</p> <p><b>The Jacobs Project Engineer on site has the option to reorder steps in order to facilitate the logistics of moving around this large hardware.</b></p>								
2.	<p>Ref: Drawing SEG38116930. Disassemble the Shipping Cover, item 14 in Figure 1, from the Lower USS Shipping Fixture by removing the fasteners, Screw Button HD Cap, HTHMBSCHM8X1-21, and flat washers, NAS1149E0563R. Place the fasteners in a marked bag for identification.</p>								
3.	<p>Attach the top eye bolts on the Shipping Cover to the four straps, and attach the other ends of the straps to the crane.</p>								
4.	<p>Slowly lift the Shipping Cover vertically to clear the flight LUSS.</p>								
24. ORIGINATOR				DATE	25. FINAL ACCEPTANCE STAMP AND DATE				
Ken Q. Nguyen <i>Ken Q. Nguyen</i>				2/12/07					
APPROVALS (Printed or Typed and Signed)									
26. PROJECT ENGINEER			DATE		27. QUALITY ENGINEER		DATE		
Ken Q. Nguyen <i>Ken Q. Nguyen</i>			2/12/07		Steve Caldwell				
28.					29.				
30.					31.				

**TASK PERFORMANCE SHEET**  
 CONTINUATION PAGE  
 NASA - LYNDON B. JOHNSON SPACE CENTER

4. TPS NO.

2A0720045

6. MOD NO.

20. OPER  
SEQ. NO.

21. OPERATIONS  
(Print, Type, or Write Legibly)

VERIFICATION

22. TECH

23. QADV

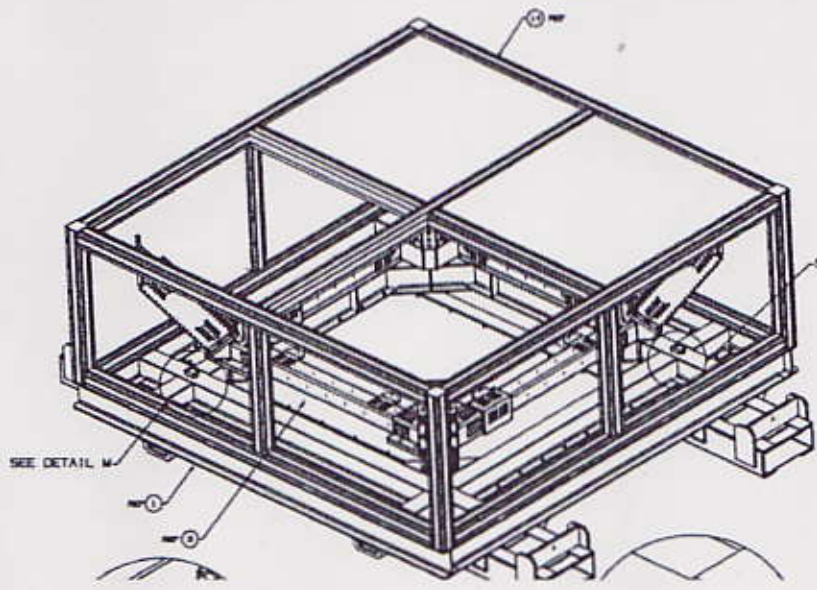


Figure 1

5. Disassemble the LUSS from Shipping Fixture by removing the fasteners, Screw Socket Head, NAS1351N6LB88, and flat washers, NAS1149E0663R, item 17 and 23 in Figure 2, for four corners. Place the fasteners in marked bag for identification.

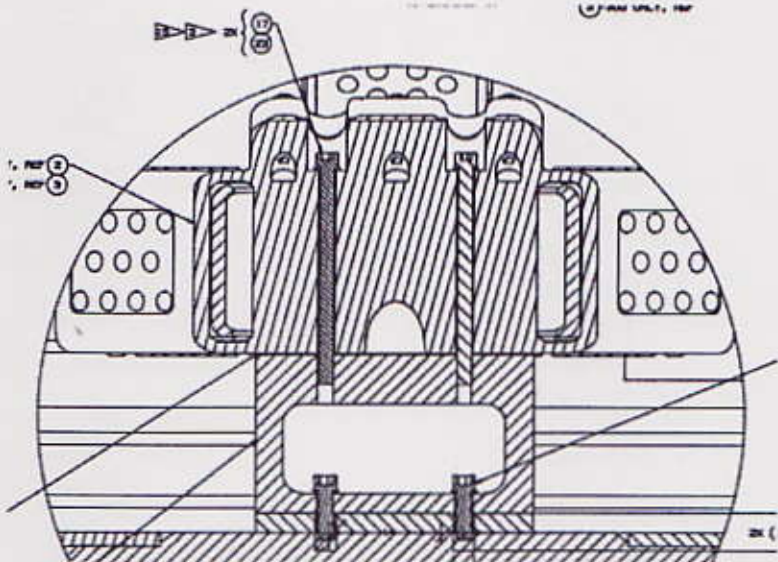


Figure 2

**TASK PERFORMANCE SHEET**  
 CONTINUATION PAGE  
 NASA - LYNDON B. JOHNSON SPACE CENTER

4. TPS NO.

2A0720045

6. MOD NO.

20. OPER  
SEQ. NO.

21. OPERATIONS  
(Print, Type, or Write Legibly)

VERIFICATION

22. TECH

23. QA/OV

6. Strap the LUSS around the four tubes, item 5 and 6 as seen in Figure 3, and attach the other ends of the straps to the crane.

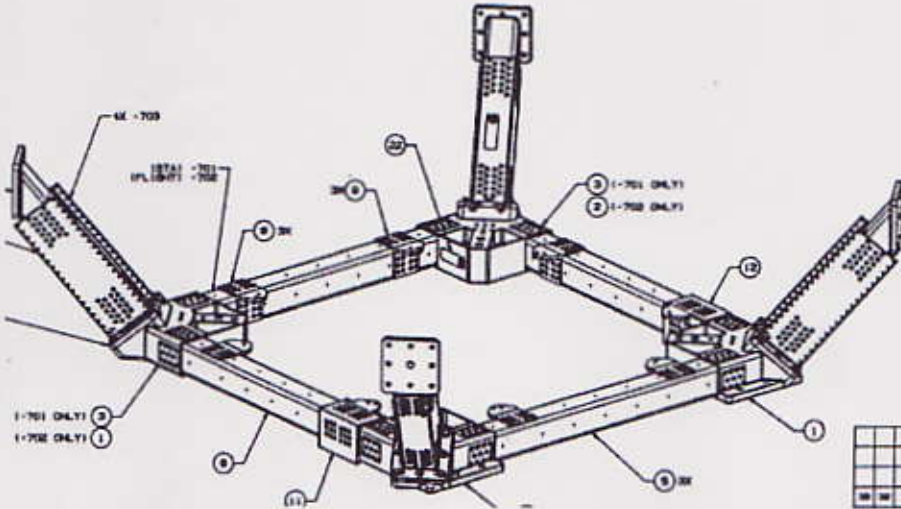


Figure 3

7. Lift the LUSS vertically (Slowly) to clear the Shipping Fixture.
8. Install the ECAL STA Assembly per procedure ECAL070208-1.  
 Procedure start date 2/12/07.  
 ESCG Designated Verifier (DV) Kend.
9. Indicate procedure end date for the ECAL STA Assembly, procedure ECAL070208-1. Procedure end date 2/12/07.
10. Lift the LUSS / ECAL integrated assembly to the LUSS Shipping Fixture.

**TASK PERFORMANCE SHEET**  
 CONTINUATION PAGE  
 NASA - LYNDON B. JOHNSON SPACE CENTER

4. TPS NO.

2A0720045

6. MOD NO.

20. OPER  
SEQ. NO.

21. OPERATIONS  
(Print, Type, or Write Legibly)

VERIFICATION

22. TECH 23. QA/DV

11. Install Screw Socket Head, NAS1351N6LB88, and flat washers, NAS1149E0663R, item 17 and 23 in Figure 2, for four corners. Record the running torque and final torque per drawing SEG38116930.

JMD  
2-12-07



2/13/07

Bolts #	Running Torque	Final Torque
1.	3.8 Nm	38.9 Nm
2.	1.4 Nm	37.9 Nm
3.	3.6 Nm	40.2 Nm
4.	5.1 Nm	41.0 Nm
5.	1.0 Nm	37.1 Nm
6.	1.5 Nm	38.0 Nm
7.	3.8 Nm	40.0 Nm
8.	6.1 Nm	38.1 Nm

Sensor:  
Serial

Wrench PN 06-2059-07 (Running)

Note M# 584405 Cal Due Date July 2007

CERT #

Display (running):  
Serial# 06-2024-07

Cert# 584415

Due date: July 2007

Wrench PN M213887 (Final)

Note M# M213887 Cal Due Date 8/3/07

12. Reinstall the Shipping Cover to the Shipping Fixture and temporary bolt it down at four corners. Install fasteners Screw Button HD Cap, HTHMBSCHM8X1-21, and flat washers, NAS1149E0563R. DO NOT APPLY FINAL TORQUE AT THIS TIME. Final torque down of the Shipping Cover shall be noted in a separate TPS.

13. Close this TPS